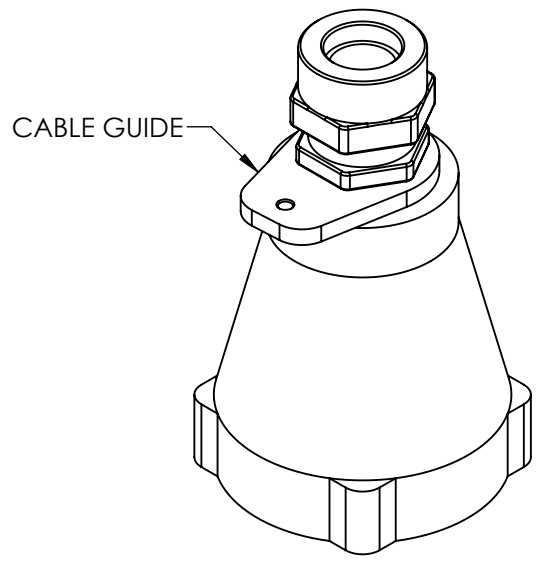
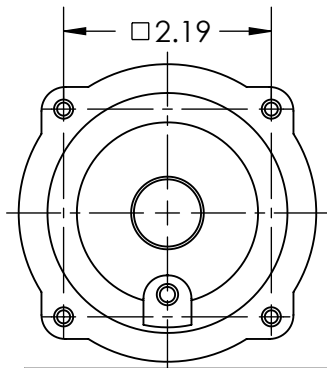
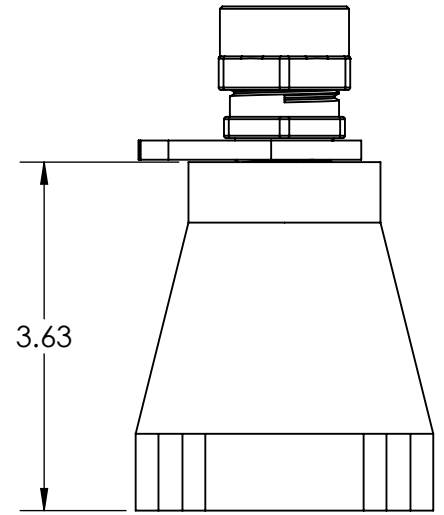
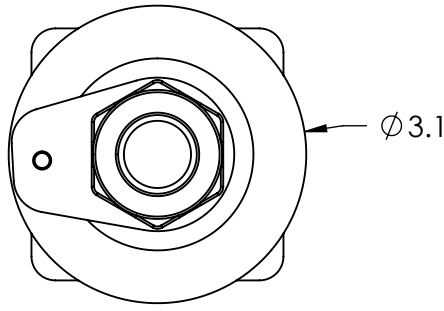


This drawing is the property of MELTRIC Corporation, Franklin (Milwaukee) Wisconsin, USA. Any unauthorized copying of this drawing by any means, ENGR/D/06 REV: 21 ISSUED DATE: 10/7/16 or disclosure of its contents to any person not authorized by MELTRIC Corporation or its agents to receive it, is strictly prohibited.

G F E D C B A



CABLE RANGE = .625" TO .750"

1
2
3
4
5
6

TOLERANCES UNLESS OTHERWISE SPECIFIED		 A COMPANY OF MARÉCHAL ELECTRIC		
MACHINED SURFACES $\sqrt[125]{\text{MAX}}$	ENGLISH			
GROUND SURFACES $\sqrt[32]{\text{MAX}}$	0.X ±0.05	DRAWN	APPROVED	DRAWING TITLE:
ANGLE TOLERANCE ±1°	0.XX ±0.01	DATE:		SIZE 3 HANDLE W/CORD GRIP & CABLE GUIDE
REMOVE BURRS & SHARP EDGES TO .015 MAX.	0.XXX ±0.005	SCALE	MATERIAL:	
DIMENSIONS SHOWN IN OVALS ARE INSPECTION DIMENSIONS.		NTS	METAL PAINTED BLUE	
		SHEET: 1 OF 1	PART NUMBER	REVISION
			793POCS4443	